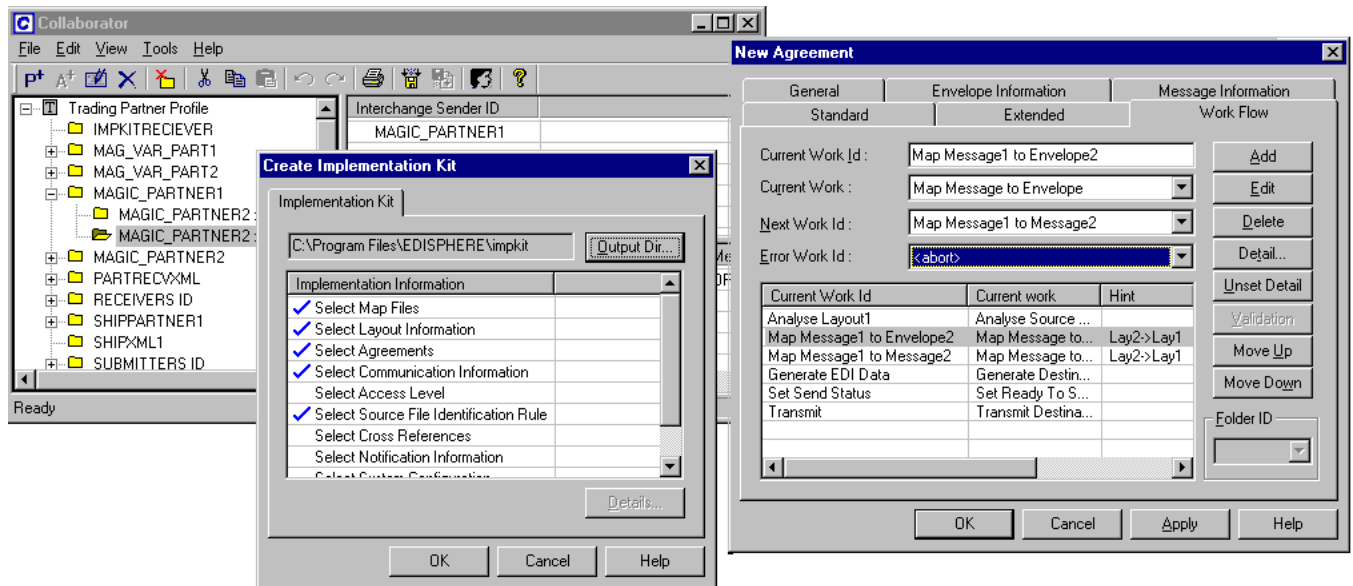


Collaborator is used for establishing trading partner relationship between the two partners. It has features to remotely deploy and support your EDI implementation.



Key Benefits

- Go live with your partner quickly**

Collaborator helps in creating trading partner agreement, which besides other information includes mapping and communication information of your trading partner, necessary for translating and exchanging messages with your trading partner. Further, the Implementation kit feature enables packaging your partner layouts, which when used by your partner along with Implementor-Analyzer (your proxy-translator) helps in eliminating EDI errors before testing your messages over Internet and VAN.
- Centrally manage your EDI implementation and partner relationships**

For multi-location companies deploying EDISPHERE in their various office locations, the "Implementation Kit" feature in Collaborator can be very effectively used for centrally managing your implementations and trading partner relationships. The entire EDI implementation for various locations can be carried out at one central location and using the Implementation kit feature it can be deployed and upgraded at other locations.
- Facilitates quality support**

The "Implementation Kit" feature, not only assist in the remote deployment of your EDI implementation, but the added ability to forward the Implementation kit to our technical support team helps us to reproduce your problem promptly, which in turn helps us in providing quality support.

Features and Benefits

Partner Information: The user can specify information such as contact information, sender-id/receiver-id, etc. about its various trading partners.

Benefits: The user is not required to re-key the same information again when creating agreements for additional message types for the same partner.

Partner Agreement: The user can establish trading partner relationship with its trading partner, which include, the mapping information about the messages the two partners wish to exchange, communication information, output file naming convention, EDI envelope specific information, etc.

Benefits: The user can communicate various message types with different trading partners, without having to worry about the occurrence of spurious messages because any message for which there is no agreement is automatically rejected. The user can also map the agreement information in the output message.

Workflow: The user is required to create workflow as part of partner agreement, wherein it specifies the order in which the translation proceeds, such as analyzing the source document first, followed by mapping envelope information, transaction information, etc. Multiple parses for mapping a source message using different criteria may also be specified in the workflow.

Benefits: The user has control of ordering the flow of translation. Multiple parsing during mapping is particularly helpful when the structure of the source file is such that it is difficult to map it to the output message in one parse.

Implementation Kit: The user can package its entire EDI implementation, commencing with the trading partner agreement and followed on by the dependent information such as the application layout, partner layout, map files, cross-reference tables, etc. in the form of an implementation "kit" to facilitate remote deployment and support.

Benefits: Users are able to outsource their EDI implementation tasks and it also helps in centralizing modifications to the EDI system spread over multiple locations.

Partner kit: The user can package the partner's layouts and sample data files in the form of a partner "kit", which are to be sent to the trading partner. The trading partner then imports this kit in the Implementor-Analyzer (which can be freely downloaded) and uses it along with its own translator.

Benefits: The Partner's kit enables trading partners to detect and correct all translation errors before conducting test-runs through the VAN or Internet. Implementor-Analyzer acts as a proxy-translator of the user. It greatly accelerates the process of going "live" with production-runs.

Reports: This feature enables print trading partner information and agreements.

Benefits: Printouts help in finding errors quickly during EDI implementation process as well as serving as a reference document.

System Requirement: Windows (NT, 2000, XP). 128MB RAM. 50 MB free hard disk space.

Contact: EDISPHERE Software Private Limited
215 Congress Nagar, Nagpur 440 012, India
Tel: +91 712 246 3314 Fax: +91 712 246 3315 Email: info@edisphere.com

Disclaimer: EDISPHERE Software makes no warranties, expressed or implied, in this summary. Readers are advised to use their judgment on accuracy of information by requesting evaluation copy of the product.